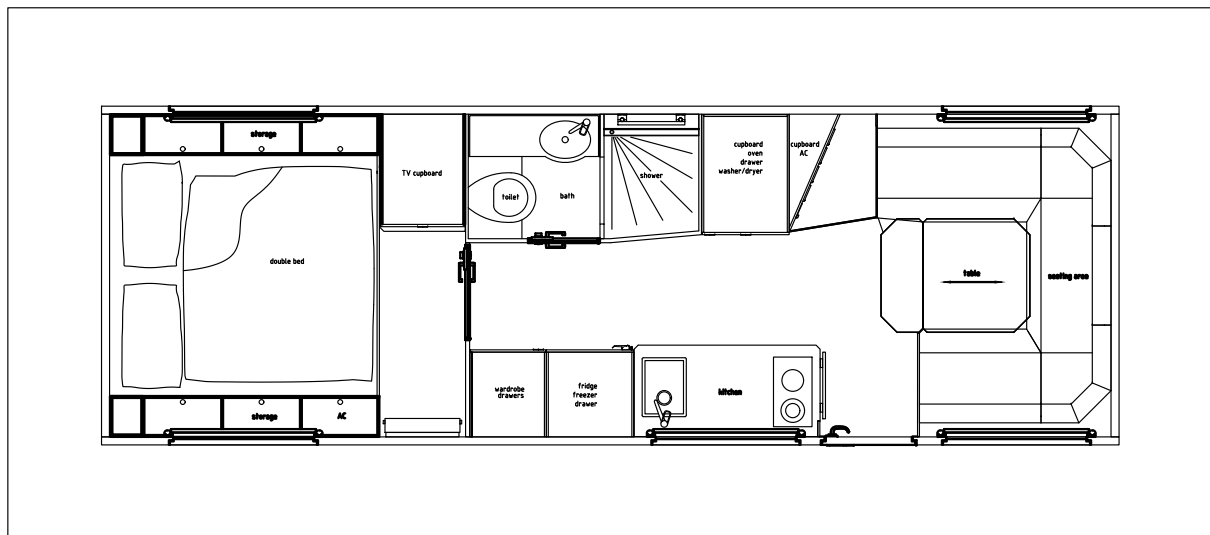


# UNICAT TerraCross Expedition Body TC76 comfort suite



- Body dimensions:** 7,60 m x 2,53 m x 2,31 m
- Seats:** 4-5
- Beds:** Master bedroom, double bed 1,80 m x 2,00 m
- Bathroom / Shower:** Bathroom with washbasin and toilet, separate shower
- Kitchen:** Induction cooker, oven with microwave, fridge 130 liters, deep freezer 65 liters
- Freshwater:** 600 liters
- Greywater:** 148 liters
- Blackwater:** 130 liters
- Battery capacity:** 6 AGM 12 V, 210 Ah, effectively usable energy 7,6 kWh



## Body

### Outer dimensions of the cabin

- Length 7600 mm (307.0"), width 2530 mm (99.6"), height 2305 mm (90.7")

### Inner dimensions of the cabin

- Length 7480 mm (302.3"), width 2410 mm (94.9"), height 2150 mm (84.6")

### Body unit construction

- Self supporting UNICAT sandwich plate panels of fiberglass composite
- Wall thickness 60 mm (2.36") with polyurethane foam insulation
- 3 mm (0.12") FRP outer surface, 2 mm (0.08") FRP inner surface
- Insulation rating 0.44 W/m<sup>2</sup> K (0.078 Btu/ft<sup>2</sup> hr °F)
- Cold bridge free glued with FRP profiles
- Floor panel with integrated steel frame for bolting of a 3-point subframe
- Additional insulation of the floor

### Entrance door and storage compartment doors

- Entrance door with staircase and fold-out steps
- Constructed of fiberglass composite panels and FRP step profiles
- Thickness of doors 60 mm (2.36")
- Internal double seal with combined hollow profile and lip seal
- Anti-theft stainless steel hinges
- Safety lock with latch bolt, dead bolt and additional locks at top and bottom
- Safety cylinder locks all keyed alike

### Windows

- Constructed of fiberglass composite panels and FRP step profiles
- Thickness of doors 60 mm (2.36")
- Internal double seal with combined hollow profile and lip seal
- Anti-theft stainless steel hinges
- Safety lock with latch bolt, dead bolt and additional locks at top and bottom
- Safety cylinder locks all keyed alike

### Roof hatch

- Burglar-proof boat hatch with mosquito net in the shower
- Acrylic glass, thickness 12,7 mm (0,5")
- Internal seal with hollow profile

## Interior Layout

### Seating unit

- U-shaped seating area for 4-5 persons with swiveling table on pedestal
- Seating area converts to bed, size: 1400 mm (55.1") x 2000 mm (78.7")

### Bedroom

- Master bedroom with door to isolate from living area
- Double bed with suspension, ventilation and heating in the rear
- Comfortable mattress, size: 1800 mm (70.8") x 2000 mm (78.7")

### Bathroom

- Separate bathroom with door to isolate from living area
- VARICOR washbasin with integrated sink and vanity unit
- Wall cupboard with mirror above the washbasin
- Porcelain toilet
- Teak floor

### Shower room

- Separate shower room with access through the bath room
- Towel radiator
- Tiled floor with slope and gutter

### Kitchen

- Kitchen cabinet with drawers on full extensions with ball bearings
- Worktop, dimensions: 1100 mm (43.3") x 650 mm (25.5")
- Built-in stainless steel sink with stainless steel tap
- 2 zone induction cooker
- Hanger cabinets above the worktop
- Cabinet for refrigerator and oven, dimensions: 600 mm (23.6") x 650 mm (25.5")
- Fridge 130 liters (34.3 US gal.)
- Deep freezer 65 liters (17.1 US gal.)
- Convection oven with microwave

### **Storage**

- Storage compartments in the seating area
- Cabinet with drawers next to the seating area
- Cabinet with shelves and drawers for Euro-Fix boxes
- Wardrobe with hanger cabinet and drawers
- Storage compartments next to the bed
- Hanger cupboards at the bed left and right
- Cabinet with drawers next to the bed
- Large, outside storage compartment in the rear under the bed

### **Workmanship**

- All furniture is built to the highest cabinetmaking standard
- Made of plywood with furniture surfaces made of laminate
- Real wood bandings
- Off-Road proven compression fasteners made of stainless steel
- Off-Road proven metal fittings and hinges
- All drawers on full extensions with ball bearings

### **Layout**

- Teak floor
- Walls and ceiling are painted with multiple coats
- Upholstery made of fabric

## Technical equipment

### Electrical equipment

- 6 AGM batteries 12 V, 210 Ah, effectively usable energy 7,6 kWh
- Control panel for monitoring of DC power and the tank levels
- Main batterie switch and automatic circuit breakers for all DC consumers
- Charging via chassis batteries with DC-DC converter
- Uninterruptible AC power supply by inverter with charger
- Continuous output 3 kW, peak output 6 kW, charging power 0,7 kW
- International charger, 90 - 260 V (45 - 65 Hz), charging power 0,7 kW
- Sockets for AC and USB

### Lighting

- LED lights at the entrance, above the table, kitchen, bed, bathroom and shower
- LED gooseneck reading lights dimmable at the seating area and at the beds
- LED strips in the outside storage compartment
- LED flashlight with charging station in the entrance area

### Fresh water system

- 2 freshwater tanks with 2 pumps and filters, capacity 600 liters (158.5 US gal.)
- All water installations are located in the frost-proof inside area of the body
- 60 liter (15.8 US gallons) hot water heat exchanger with electric heater
- City water connector
- Outside shower
- Comfortable winterisation system for the fresh water system

### Wastewater system

- Wastewater tank capacity: 148 liters (39.0 US gal.)
- All installations are located in the frost-proof inside area of the body
- Lifting pump for the shower
- Pneumatic operated tank evacuation valve, heated
- Discharge operated from the cab and body

### **Toilet system**

- Porcelain toilet with water flushing
- Holding tank capacity: 130 liters (34.2 US gal.)
- All installations are located in the frost-proof inside area of the body
- Vacuum tank ventilation with activated carbon filter
- Pneumatic operated tank evacuation valve, heated
- Discharge operated from the cab and body

### **Heating system**

- Central heating system (9,0 kW) for diesel fuel with height adjustment
- Radiator in the seating area
- Towel radiator in the shower
- Radiator in the bedroom
- Bed heating under the mattress
- Heat exchanger in the rear storage compartment
- Antifrost system

## Options

### **Body**

- Slope at rear to improve angle of departure
- Passage way to drivers cab with lockable door panel
- Central locking system with remote control
- Mosquito net for entrance door
- Roof hatch
- Fixed windows in front
- Spare wheel rack at the rear
- Motorcycle rack
- Bike rack
- Special painting
- Further options on request

### **Interior layout**

- Folding kitchen countertop
- Off-Road proven separation for tableware, cookware and kitchen appliances
- Upholstery made of ALCANTARA or leather
- Wardrobe in master bedroom
- Further options on request

### **Technical equipment**

- 8 LiFeYPO<sub>4</sub> cells 13,8 V, 200 Ah, effectively usable energy 16,4 kWh
- Solar power system
- Arctic package with additional radiators
- Floor heating in bath and shower
- Air conditioning
- Roof fan in the kitchen
- Dishwasher
- Additional fresh water tanks, capacity 410 - 560 liters (108 - 147 US gal.)
- Drinking water disinfection system
- Washer-dryer
- TV
- Further options on request

